



CONNECTION OF DECENTRALIZED SYSTEM LANDSCAPES VIA INSYS ICOM AND ORCHESTRA JUNO

RETROFIT SOLUTION WITH INSYS ICOM

Digitalization and Industry 4.0 make it clear to industrial companies with machine fleets that there is a need for modernization. A cost-effective alternative to purchasing all new machines is the digital retrofit. Together with INSYS Icom, our partner company in the field of industrial data communication, soffico was able to create a geographically independent infrastructure to network decentralized systems from 150 locations. Read our success story with the retrofit solution.

Retrofit-Solution – a Definition

Retrofit describes **the modernization or expansion of existing plants** to meet the requirements of Industry 4.0. In detail, this means: A retrofit solution equips existing machines or plants with modern sensor and communication technology. This not only saves costs compared to a new acquisition - retrofitting also enables previously unrecordable machine and process data to be recorded, with the help of which maintenance can be secured and so that a general process

improvement can be achieved. Also modern legal requirements, for example the limits of emission values, emissions can be met thanks to the retrofit

Why retrofit: Why is the digitization of legacy systems a good solution?

Hardly any company in industrial manufacturing can escape far-reaching digitization in this day and age. Existing legacy systems and brownfield plants play a decisive role here. In most cases,



these do not meet the requirements for successful integration into individual IoT use cases. On the one hand, we observe limitations on the hardware side, such as a lack of sensors. On the other hand, however, there is also a lack of data infrastructure and interfaces for the correct forwarding of machine data. This lack of interoperability can be retrofitted to existing machines using the Orchestra retrofit solution.

Benefits, purpose and goals

More profitable than New acquisition

When it comes to digitization projects, it is economically advantageous to retrofit existing machines and systems. Retrofitting is often significantly cheaper than purchasing and installing new machines. In this way, you also avoid an economic standstill due to new installations.

Better integration, better networking

The emerging connection of brownfield plants leads to comprehensive improvements in connectivity. With the right integration architecture based on the Manufacturing Service Bus Orchestra, a wide range of use cases can be implemented. From closed-loop production to MES integration and predictive maintenance. Data must be made available and made available.

With Orchestra we make you fit for your IoT use case

With minimal downtime and the lowest possible effort, we can make your existing legacy systems as well as machines and plants fit for the future thanks to retrofitting through serial interfaces, Modbus, S7 and our strong partner network. Our experts always support you in semantic enrichment of the data flows.

RETROFIT PROJECT WITH OUR PARTNER INSYS ICOM

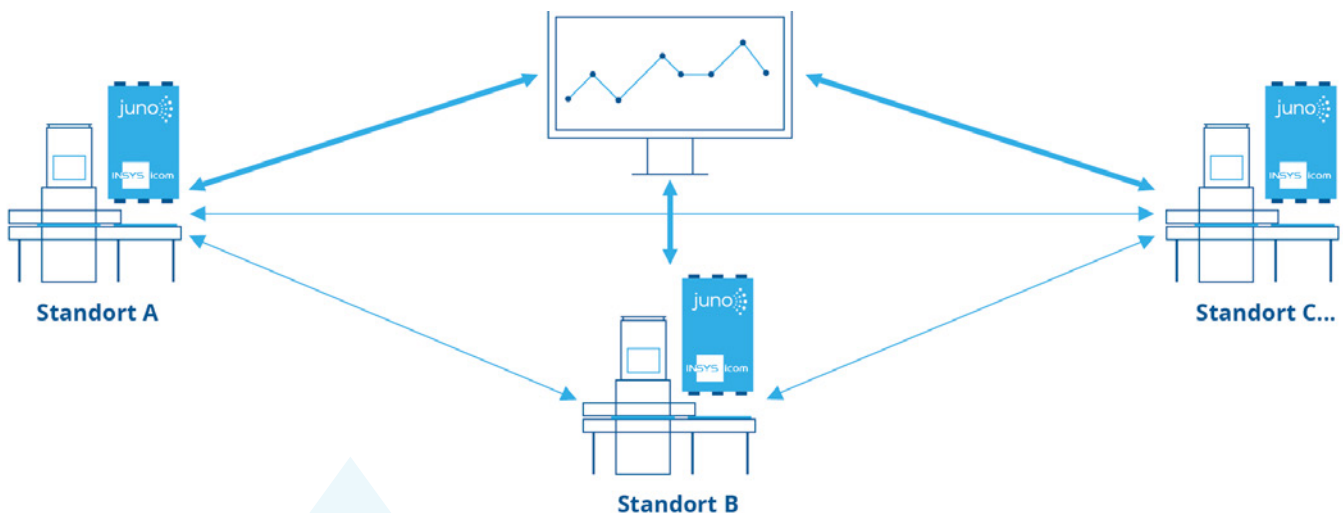
Together with our partner INSYS Icom, a flexible, geographically independent infrastructure was created to network decentralized systems from 150 locations. During the successful retrofit, care was taken to take over existing legacy systems and to convert them to current standards for the new requirements. INSYS Icom is specialized in components and solutions for secure communication of M2M and IoT applications. **Connecting the decentralized**

system landscapes with the retrofit solution brings numerous advantages of digitization:

- Provision of a flexible, geographically independent infrastructure
- Investment protection of existing IT systems to current standards through retrofit
- Provision of information by networking decentralized

systems with internal and external IT systems

- Channeled communication between decoupled layers
- Low configuration effort



How was the project implemented?

The implementation was based on the Orchestra junos Plug & Produce concept with the support of the INSYS Icom Gateway and the junos Edge Client. After the roll-out, it was thus possible to use junos as a data buffer in case of network interruptions. junos thus **serves as an intermediate module**, as so-called

middleware, which maps the data from the old to the new protocol. The resulting preconfigured solution can quickly and easily preprocess raw data directly at the plant or machine at the respective location, aggregate it and make it available to the communication partners. Local processing and filtered forwarding of data to higher-level

systems additionally reduce network traffic. This approach allows machine data to be integrated via standard protocols and secure remote maintenance to be made available.

THE BENEFITS AT A GLANCE

Secure all the advantages **that Industry 4.0 brings for you and your company by retrofitting and modernizing.** Retrofitting is just one option here, in addition to our many success stories such as successful **SAP integration** or **data monitoring.**

Safely into the future
through variable retrofit

Reliability
through local data buffering

Cost-saving
through optimization and
minimal configuration
effort

With Orchestra you digitize in a benefit and result-oriented way!

We are your contact for digital transformation in the industry. With Orchestra, we take you further - no matter where you are at the moment. From the start of your digitization project to the holistic networking of your production data and processes. With Orchestra, you build your own Industrial Suite.



Fully modular and tailored to your IIoT use case



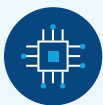
Use of production and manufacturing data along the entire value chain



Low-code approach thanks to graphical user interface



Highly scalable through integration of a wide variety of protocols and formats



Connection of all relevant IT systems



From the control cabinet to the cloud: integration of existing systems and plants



Transparent monitoring of your data flows

You want to learn more?

If you have any personal or further questions about this success story, our experts will be happy to help you. We would also be happy to present Orchestra to you personally in a live demo!

Learn more about our products!



Rica Holzmann

Sales & Partnermanagement

t: +49 821 455 901 47

e: rica.holzmann@soffico.de



Sarah Blomeier

Sales & Partnermanagement

t: +49 821 455 901 67

e: sarah.blomeier@soffico.de